

# THE **OM** AT THE FOOT OF MOUNT ROYAL

PRESENTED BY **CN**

## QUICK PRACTICAL GUIDE

**FREE  
CONCERT**



**ORCHESTRE  
MÉTROPOLITAIN**  
Yannick Nézet-Séguin



Main partner

Québec

Montréal



TOURISME /  
MONTREAL

Ville-Marie  
Montréal



LA  
PRESSE

LEDEVOIR

AUTHENTIC  
VINS ET SPIRITUEUX  
WINE & SPIRITS MERCHANTS

HQ  
AUDIO



**10<sup>th</sup>**  
**EDITION**

**CONCERT AT THE FOOT  
OF MOUNT ROYAL**

**WEDNESDAY, JULY 30  
7:30 P.M.**

CHEF  
**YANNICK NÉZET-SÉGUIN**

HOST  
**MARIANA MAZZA**

WITH A SURPRISE GUEST!



## PROGRAM

- FELIX MENDELSSOHN  
**Symphony No. 4 "Italian"**
- AUGUSTA HOLMÈS  
**Ludus pro patria: Night and Love**
- GRATTON HECTOR  
**Dansons le carcaillou**
- IGOR STRAVINSKI  
**The Firebird (suite 1919) : Infernal  
Dance, Lullaby, and Finale**

THE

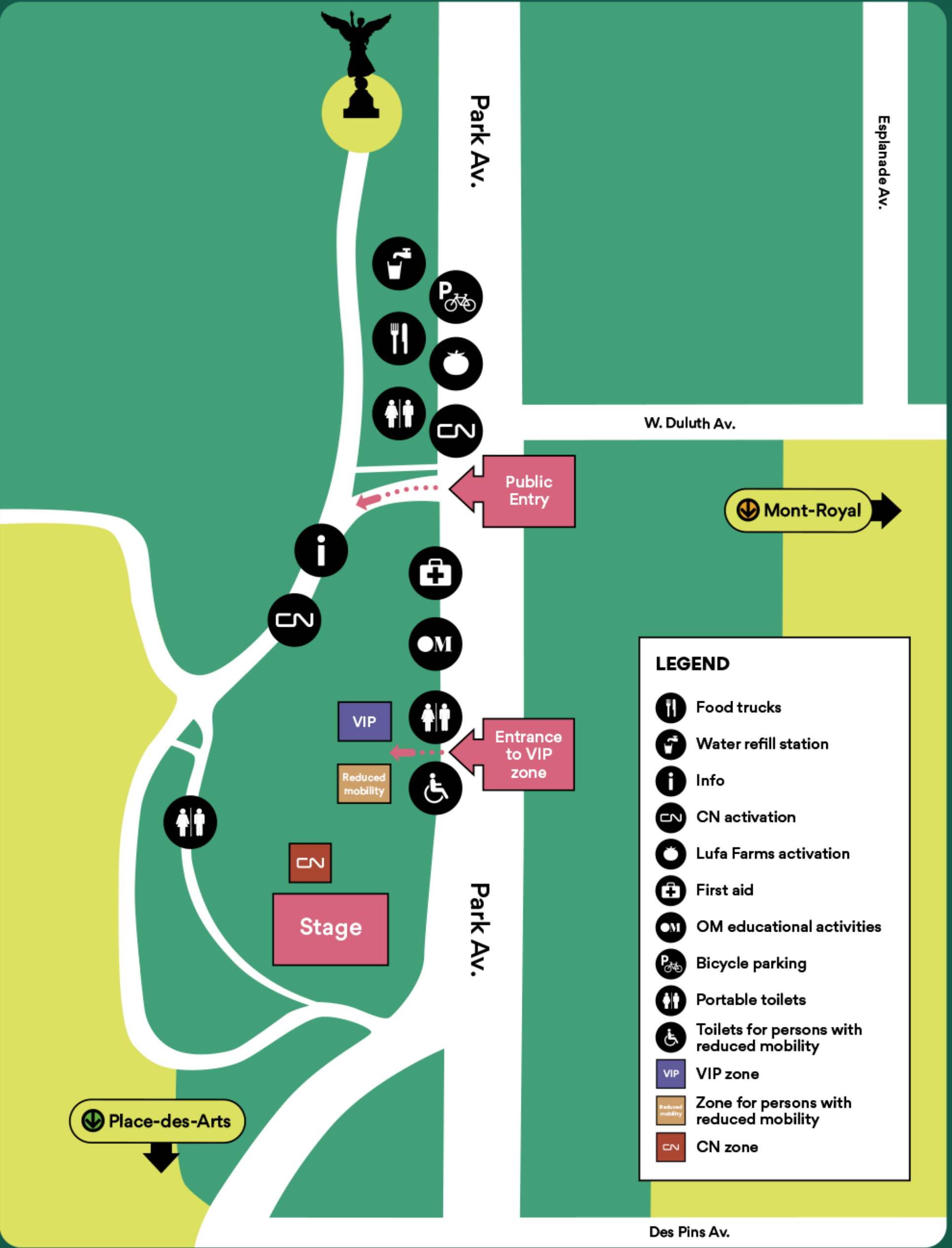
OM

AT THE FOOT OF  
MOUNT ROYAL

PRESENTED BY

CN

SITE PLAN



As part of the CAM Touring Program



# Free outdoor concert open to all!



**At the foot of mount Royal,  
along avenue du Parc, between  
avenue Mont-Royal and avenue  
des Pins.**





# OUR PRACTICAL SUGGESTIONS



Arrive early to choose a good location.



Bring a camping chair or blanket for added comfort.



If you're bringing a picnic or refreshments, use reusable containers.



Please leave the area clean by picking up your garbage before you leave.

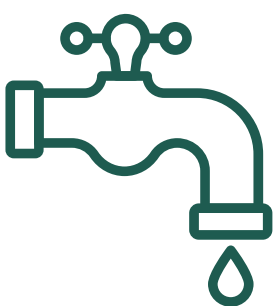


# SERVICES AND AMENITIES



**Food trucks: a variety of catering options available.**  
*(See the “Food trucks” page for more details)*

**Toilets: located at several points around the site.**




**Drinking water station: bring your own reusable bottle for free refilling.**

**First-aid station at public entrance.**

*(Consult the site map)*



**Visit the different  and Lufa kiosks, as well as our OM kiosk.**



# HOW TO GET THERE?



**We strongly recommend that you use public transport to get to the site.**



**Mont-Royal**



**Place-des-Arts**

Please visit [stm.info](https://www.stm.info) for more information on timetables and routes.



**To find out where the nearest BIXI stations are located, visit [bixi.com](https://www.bixi.com).**

## **PARKING FOR BICYCLES**

Free bicycle parking\* is available on the concert site.

Please use the dedicated bike parking areas, not the fences, and collect bikes before 10pm.

\*Limited spaces

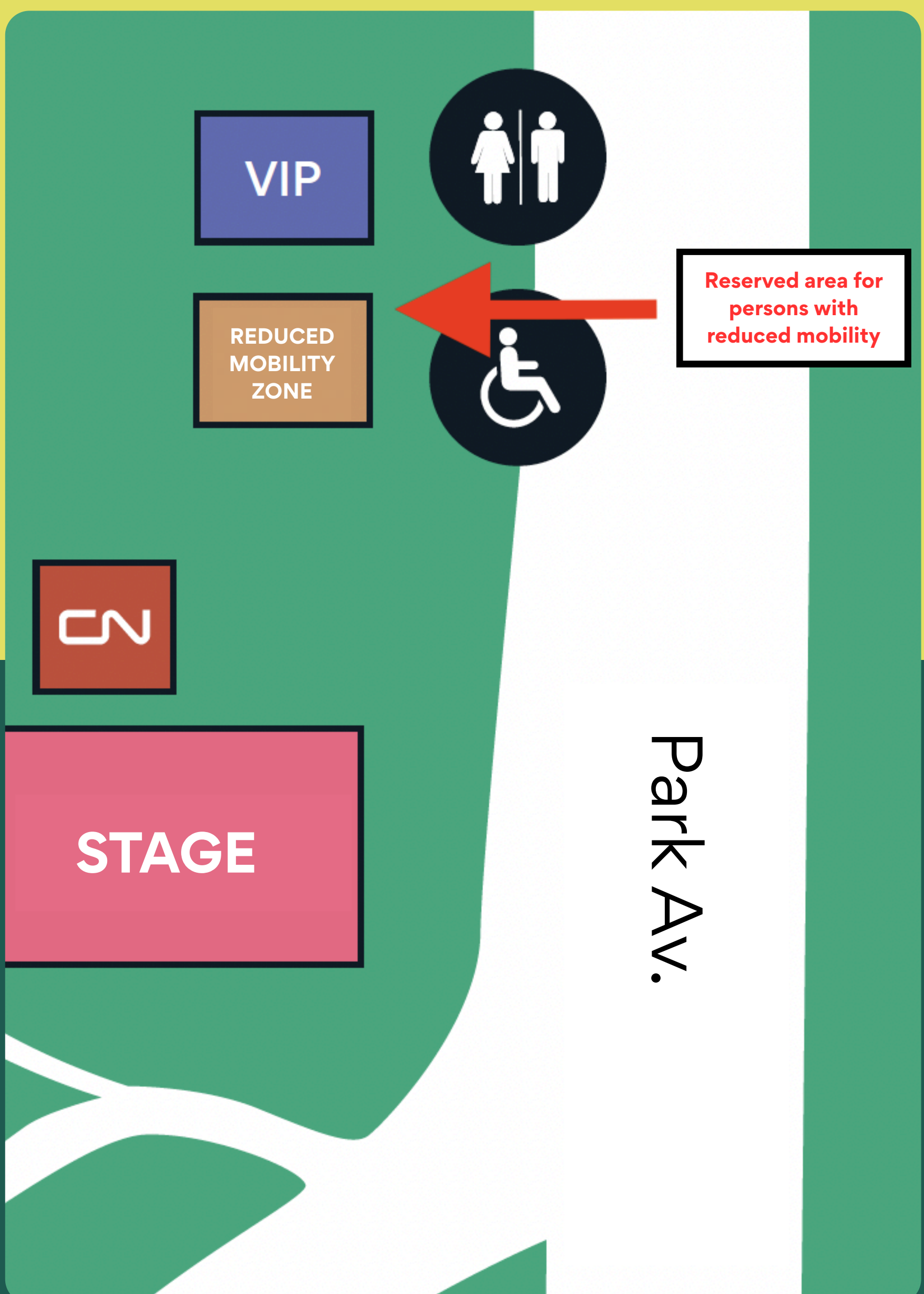


**The site is accessible to**

**PEOPLE WITH REDUCED MOBILITY**



**A dedicated area is available to ensure a welcoming and comfortable experience for all and accessible sanitary facilities are available to accommodate the needs of wheelchair users.**





## STM PARATRANSIT

**For people using STM adapted transport, the recommended drop-off location is 300 rue Léo-Pariseau.**

For any question related to the reservation, please refer to the STM website :

<https://www.stm.info/en/para>

## METRO ACCESS

**To reach the site by metro, get off at Place-des-Arts station and take exit D (De Bleury Street, North).**

**This exit has an elevator.**

A ramp allows wheelchair users to access the reduced mobility area from Avenue du Parc.

One attendant per person is allowed in the reduced mobility area.

# FOOD TRUCKS

STARTING AT 4 P.M.!

**The following food trucks will offer food and refreshment options on the concert site.**



*Lemonades*



*Greek bowls and gyros*



*Burgers and  
poutines*



*Sandwiches, french fries,  
salads, poutines*



*Ice cream*

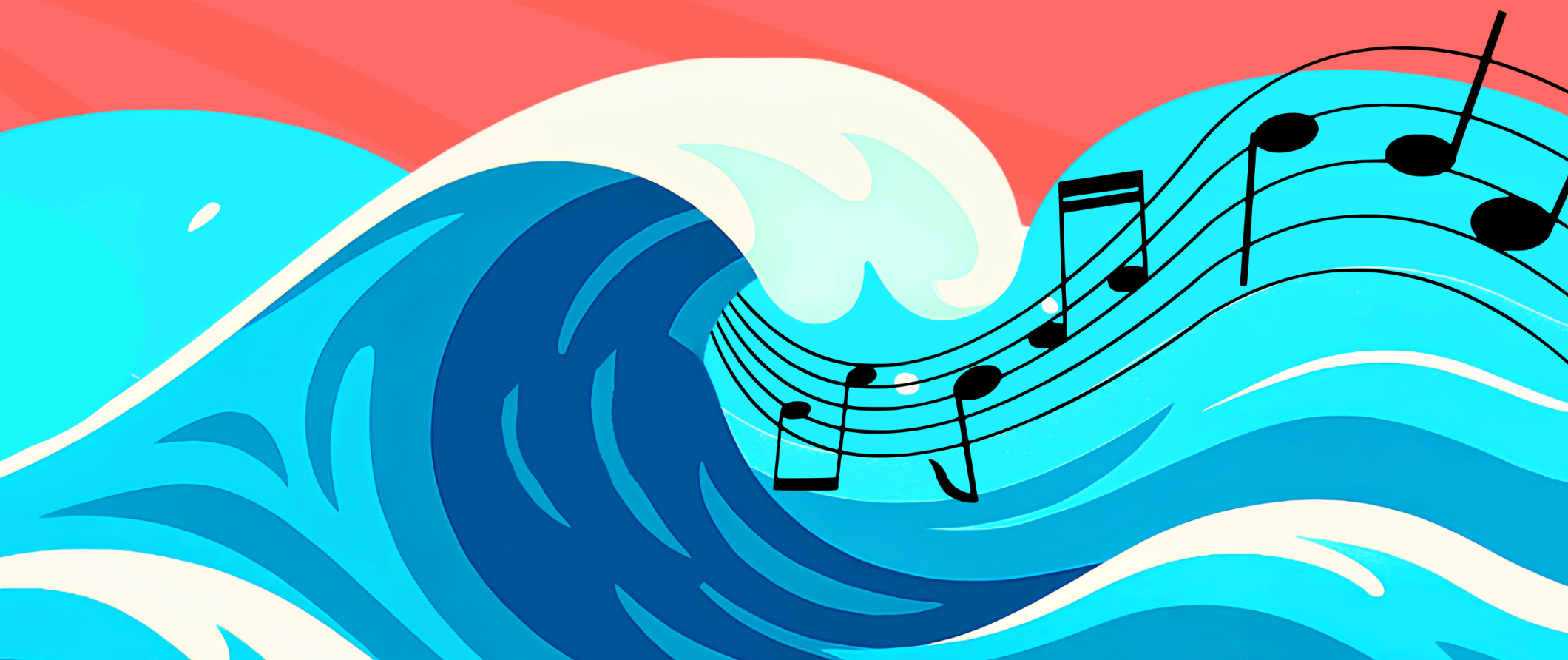


# MAKE WAVES WITH YOUR DONATION

DIVE WITH THE **OM**  
AND LET THE MUSIC RESONATE FOR ALL

BY TEXT MESSAGING

Text **OM**  
to **20222** to make a  
**\$5 donation**  
to the Orchestre Métropolitain



Your \$5 donation will be added to your cell phone bill.



The concert will only be cancelled in case of unforeseeable events.

For any updates, check our social media!

**SUBSCRIBE NOW  
SO YOU DON'T MISS  
ANYTHING!**



on Instagram **@orchestre\_metropolitain**



on Facebook **Orchestre Métropolitain**



Subscribe to our **newsletter** and be the first to know about all our activities.



OM thanks its partners for the concert at the foot of Mount Royal



# ENJOY THE CONCERT!



ORCHESTRE  
MÉTROPOLITAIN  
Yannick Nézet-Séguin